

Prairie Point Metropolitan District No. 1
8390 E. Crescent Parkway, Suite 300
Greenwood Village, Colorado 80111
Office: 303.779.4525 Fax: 303.773.2050

December 19, 2023

Division of Local Government
1313 Sherman Street, Room 521
Denver, CO 80203
[Via E-File Portal](#)

Office of the Arapahoe County Clerk &
Recorder
Administration Office
5334 S. Prince Street
Littleton, CO 80120 clerk@arapahoegov.com

Office of the Arapahoe County Assessor
Administration Office
5334 S. Prince Street Littleton, CO 80120
assessor@arapahoegov.com

Re: Prairie Point Metropolitan District No. 1 – Map Filing

Dear Filing Administrator:

Colorado Revised Statute §32-1-306 requires special districts to provide a current, and accurate map of its boundaries to the Division of Local Government, County Assessor and Clerk and Recorder on or before January 1, of each year. In 2023 the District above has had no boundary adjustments, inclusions, or exclusions.

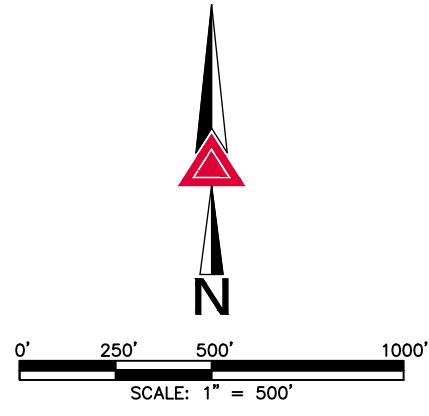
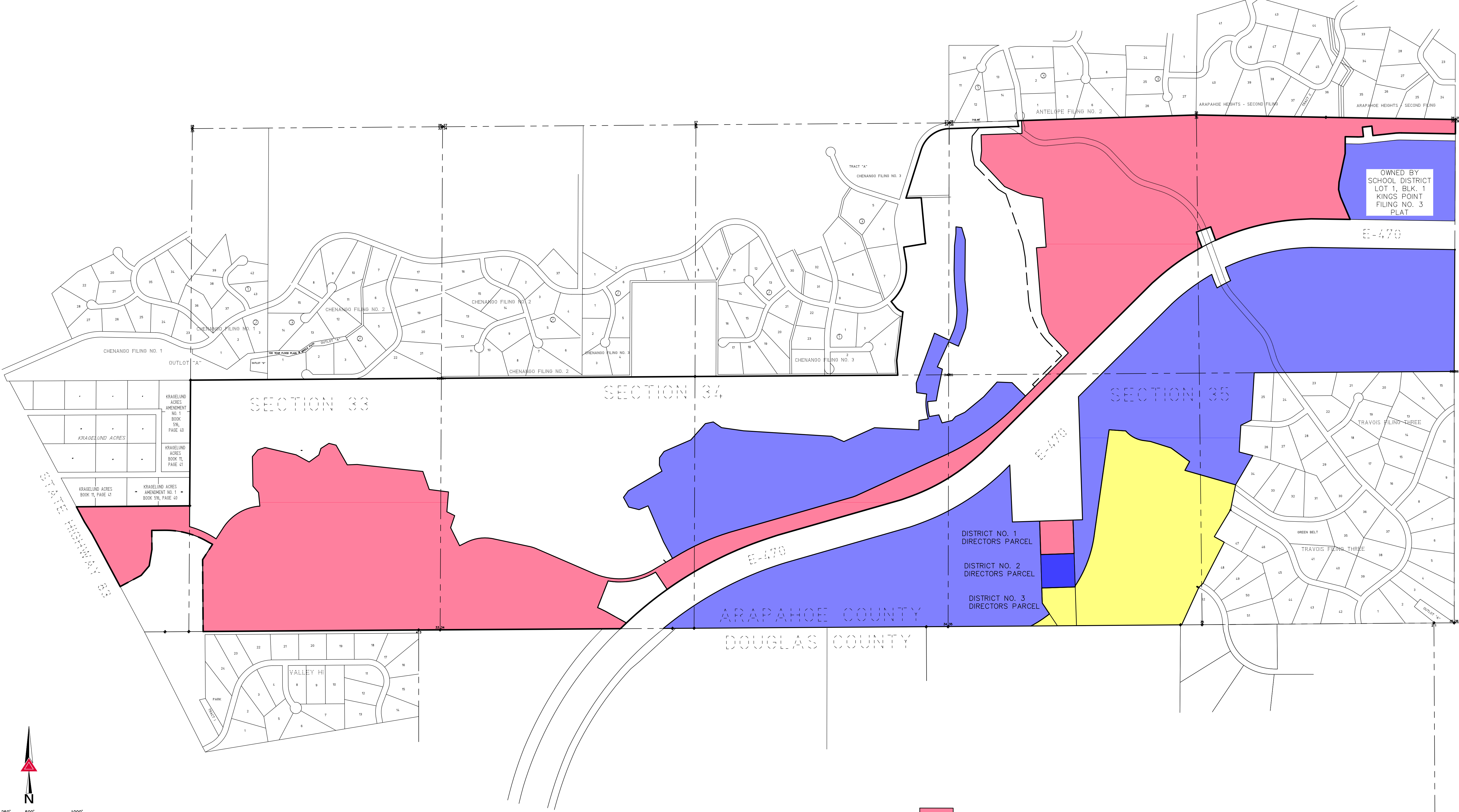
Please use the current map on file for any boundary questions. Should you have further questions or need additional information, please contact the undersigned.

Sincerely,

Natalie Herschberger

Natalie Herschberger
District Administrator

PRAIRIE POINT METROPOLITAN DISTRICTS 1, 2 & 3 BOUNDARY MAP



- DISTRICT NO. 1
- DISTRICT NO. 2
- DISTRICT NO. 3

Q:\171721-01 - KINGS POINT SURVEY TASKS\DWG\DISTRICT EXHIBITS\DISTRICT 1 2 3 MAP-INTERIM.DWG

AZTEC CONSULTANTS, INC. <small>AzTec Proj. No.: 171721-01</small>	300 East Mineral Ave., Suite 1 Littleton, Colorado 80122 Phone: (303) 713-1898 Fax: (303) 713-1897 www.aztecconsultants.com	PRAIRIE POINT METRO DISTRICT MAPPING 2023 UPDATE	DATE OF PREPARATION: 12/13/2023 SCALE: 1"=500' SHEET 1 OF 1
--	---	--	---